

Hash House H1-630 User Manual

Please read this manual carefully before using the product and keep it for future reference.



inquiry@hashhouse.tech | www.hashhouse.tech

Product Overview

The H1-630 Server is a Script mining device designed and manufactured by Hash House. It features a slim, low profile enclosure that integrates the cooling system, power supply, control board, and hash boards into a single compact unit. The H1-630 delivers strong mining performance while maintaining low operating noise, making it suitable for home and indoor environments. Each unit is fully tested and preconfigured before shipment to ensure a fast and straightforward setup.



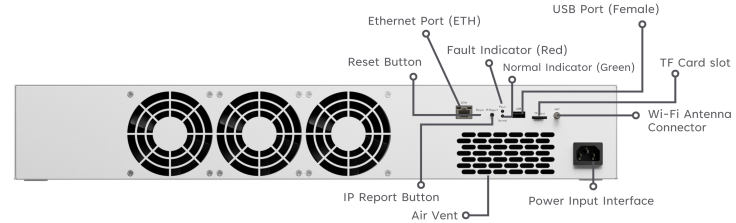
Note

- Place the server securely and route cables properly to maintain stable operation.
- Do not remove the server cover during normal operation. Ensure that the screws are tightly screwed and the cover is sealed.
- The server must be connected to a grounded mains power outlet that is easy to access.
- Ensure the power connection is stable before operation.
- Do not remove any screws or cut cable ties attached to the device.

Server Components

All internal components including the control board, hash boards, power supply, and cooling system are enclosed inside the chassis. Only the external ports and indicators are accessible during normal operation.

Interface Specifications



Ethernet Port (ETH)	Use a standard RJ45 Ethernet cable for wired network access and data transmission.	USB Port (Female)	Reserved for future use. This port is not active in the current version.
Reset Button	A recessed reset button. Use a pin to press and reset the system if required.	TF Card slot	MicroSD card slot for manual boot or firmware recovery if the device cannot start normally.
IP Report Button	Press this button to broadcast the device IP address on the local network.	Wi-Fi Antenna Connector	External Wi-Fi antenna that provides wireless network connectivity. Supports 2.4 GHz networks and is used only when an Ethernet connection is not available.
Normal Indicator (Green)	A steady green light indicates normal operation.	Power Input Interface	AC Power Input.
Fault Indicator (Red)	A red light indicates an error. Check system logs or restart the device.		

Note

The power supply model for the H1-630 Server is FP 104. The fan system is built inside the enclosure. Do not open the enclosure to avoid short circuits or electrical hazards.

Server Specifications

Product Glance	Value
Version	1.0.0
Model	H1-630
Crypto Algorithm/Coins	Scrypt
Hashrate, MH/s	2100 ± 3%
Power on wall@25°C, Watt	630 ± 10%
Hashrate- High Perf Mode, MH/s	2300 ± 3%
Power on wall@25°C - High Perf Mode, Watt	700 ± 10%
Power efficiency on wall @25°C, J/MH	0.3 ± 10%

Hardware Configuration

Network connection mode	RJ45 Ethernet 10/100M WIFI 1x1/802.11 bgn
Size without package (Length*Width*Height), mm	630*415*100
Size with package (Length*Width*Height), mm	690*475*160
Net weight, kg	12.7
Gross weight, kg	14.2

Power Supply

AC input voltage, Volt	100~240
AC Input Frequency, Hz	47~63
AC Input current, Amp	10

Environment Requirements

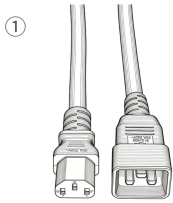
Operation temperature, °C	0~40
Storage temperature, °C	0~40
Operation humidity(non-condensing), RH	10~90%
Operation altitude, m	≤2000

Caution

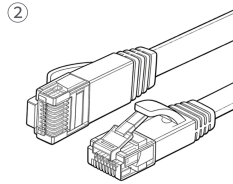
- Wrong input voltage can damage the device.
- Maximum operating conditions are 0 to 40°C at an altitude of 0 m.
- Make sure both the storage and operating temperatures remain within 0 to 40°C. Operating outside this range may cause damage to the miner.
- The typical operating current for the power cable is 10 A.
- At altitudes between 900 and 2000 m, the maximum operating temperature decreases by 1°C for every 300 m of elevation.

Miner Installation and Power-On Guide

Preparation



C13 power cable



Ethernet cable



Anti-slip pads(better to have)



Wi-Fi antenna(if needed)

Place the Miner

- 1.Remove the miner from the packaging and place it horizontally on the energy storage cabinet, or on any flat surface with good air flow and enough surrounding space.
- 2.Ensure the side with the printed text faces forward and align the fan direction with the airflow grooves on the cabinet below.
- 3.Place anti-slip pads at the four corners to prevent movement.

Network Connection

- Install antenna if using Wi-Fi.
Remove the Wi-Fi antenna from the package and screw it onto the antenna connector on the miner housing.
 - If using Ethernet, connect a standard RJ45 cable to the miner.
- * A wired connection is recommended for stable mining performance.

Power Connection

- 1.Power requirements: 110/220 V AC, 10 A, with a C14 power inlet.
 - 2.Use a standard C13 power cable. Connect one end to the miner and the other end to a suitable AC outlet.
- After power is connected, the miner will start automatically.

Ethernet Port Indicator Lights

- Green: normal
 - Yellow or Red: network issue
-

Normal/Fault port indicator light

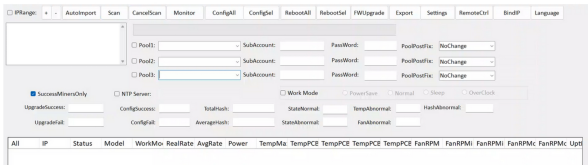
- Green: Normal indicator
 - Red: Fault indicator
-

Allow approximately three minutes for the system to complete startup.

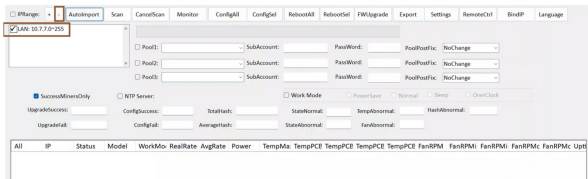
Miner Installation and Power-On Guide

Software Setup

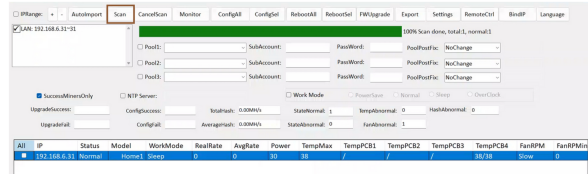
1. Download the H1-630 Tool from the official website at www.hashhouse.tech.
2. Extract the zip file and open the H1-630 Tool.exe application as shown below.



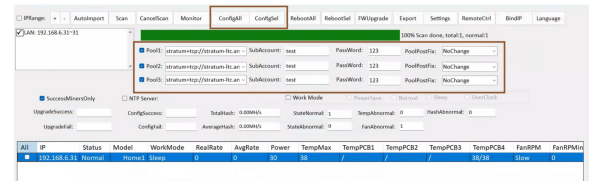
3. Remove any default IP range shown in the top left by clicking the “-” button if it appears, then select “Auto Import” to automatically detect the miner’s IP address.



4. Press the “Scan” button. The tool will display the information of the servers detected in the current network segment.



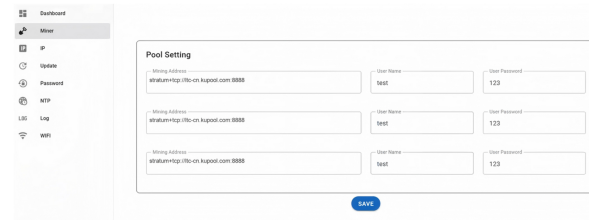
5. Fill in the Pool information on the window and then click “ConfigSel” for selected miners or “ConfigAll” button for all miners to take effect.



6. Select the scanned miners and click “RebootSel”/or “RebootAll” to reboot the miners. Wait about 3 minutes for the miner to begin operating.

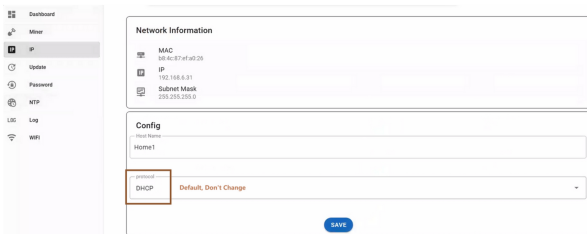
Website configuration (Optional)

1. Double-click the selected line to open the server’s web page in your browser.
2. Log in using the default credentials
username: root
password: root
3. Click the Miner icon on the left side, enter the pool address, subaccount, and password, then click Save to apply the settings.



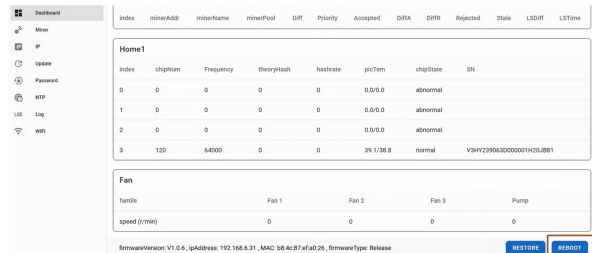
Miner Installation and Power-On Guide

4. In the IP section, DHCP is enabled by default and is recommended for automatic IP assignment.



5. If needed, choose Static IP and enter the IP address, Subnet mask, gateway, and DNS Server. Static IP configuration is not recommended here to avoid IP conflict.

6. Return to the Dashboard page and click the Reboot button. The miner will restart. Wait about 3 minutes for mining to begin.

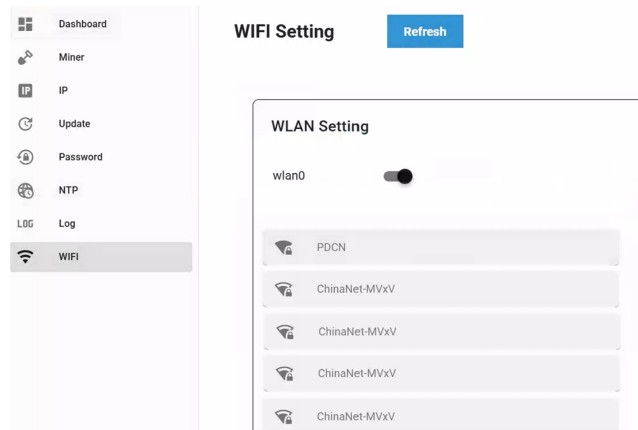


Note

Make sure the host computer and the server are on the same internal network, whether connected by wired or wireless access.

Wi-Fi Configuration

1. Connect the server with an Ethernet cable.
2. Open the web interface and go to the Wi-Fi section.
3. Click Refresh and select your Wi-Fi network. Enter the password.

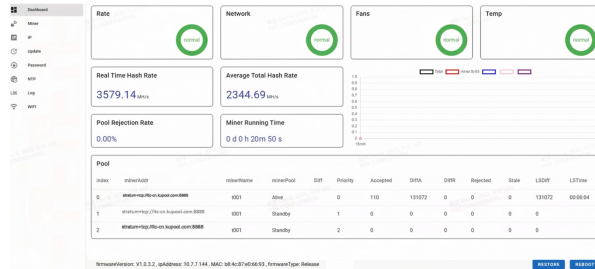


4. Disconnect Ethernet and rescan with H1-630 Tool.
5. Configure the mining pool and start wireless mining.

Miner Installation and Power-On Guide

Server Monitoring

After approximately 30 minutes of operation, the dashboard will display real time mining status as below.



Note

If the outlet temperature reaches 85°C, the system will activate high temperature protection and stop mining automatically.

Glossary of Website Terms

Option	Description
Index	Hash board interface number
Chip Num	Number of chips detected in the chain
Crypto Algorithm/Coins	Script
Frequency	ASIC running frequency
Theory hashrate	Theoretical hashrate of each hash board (MH/s).
Hashrate	Board level hashrate of each hash board (MH/s).
Pic Temp	Onboard temperature of each hash board(inlet/outlet) (°C).
SN	Series number of each hash board

APP Link Guide

1. Download and Installation

A) Option 1: Install via App Store (Recommended)

- Open the App Store on your mobile device (App Store / Google Play / Huawei AppGallery, etc.).
- Search for "HashHouse".



- Tap Download. Once installation is complete, open the app from your home screen.

B) Option 2: Download from the Official Website (Android Only)

- Use a browser to visit the official HashHouse website: Hashhouse.tech
- Locate and download the installation file HashHouse.apk.
- Open the file in your phone's file manager and follow the on-screen instructions to complete installation.

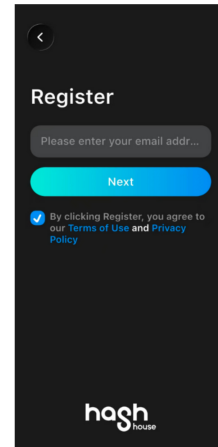
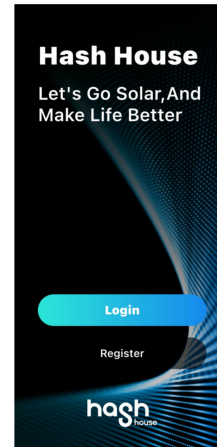
If prompted with "Unknown sources", please enable installation from the browser in your system settings.

Note

For security purposes, please download the app only from official app stores or the official HashHouse website.

2. User Registration

- Open the HashHouse APP.
- For first-time users, tap [Register] to enter the registration page.
- Enter your frequently used email address, then tap NEXT.
- Check your inbox for the verification code, and enter it into the corresponding field in the app.
- Tap [Register], set your password, and complete account creation.



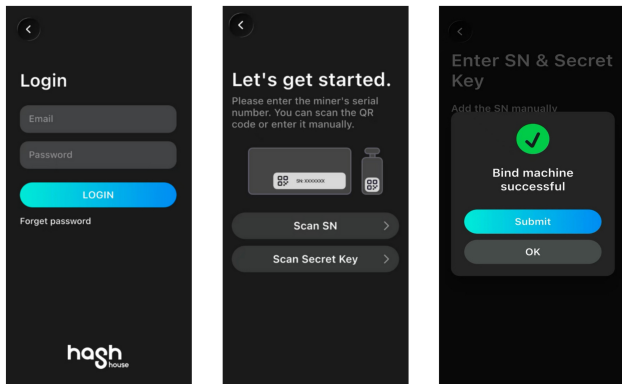
APP Link Guide

3. Bind Your Miner

- After successful registration, the app will automatically redirect you to the [Add Miner] page.
- If you are not redirected, return to the login page and log in again using your email and password.
- Locate the SN label and the corresponding SecurityKey on the miner.
- In the app, enter or scan the SN and SecurityKey.
- Tap [Bind Miner] to complete the connection.

If binding fails, please follow the on-screen instructions to verify the information entered and ensure the miner is connected to the ethernet.

A successful binding message will appear after completion:



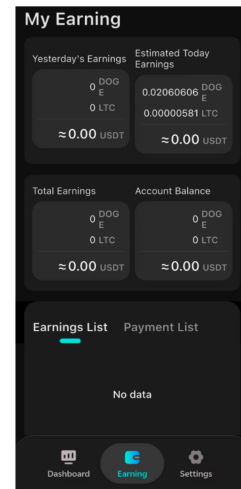
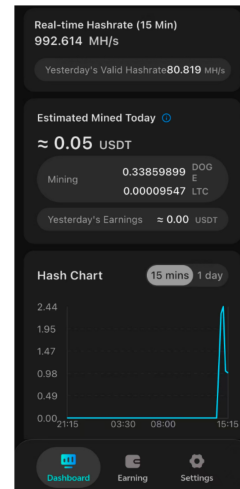
4. View Hashrate and Earnings

· Real-Time Hashrate Dashboard

Go to the [Dashboard] page to view the miner's real-time status, hashrate chart, and online status.

· Historical Earnings Records

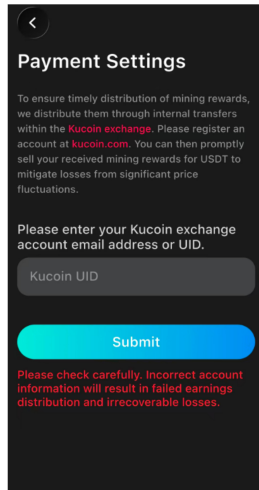
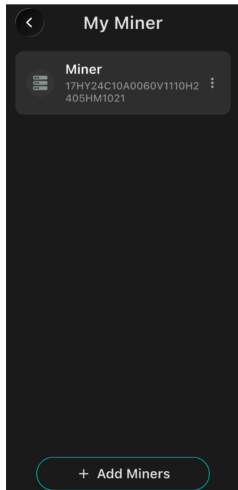
Enter the [Earning] page to view daily earnings and total accumulated earnings.



APP Link Guide

5. Additional Settings

- Go to the [Setting] page.
Enter MyMiner to view miners currently linked to your account. Tap Add Miners at the bottom to start binding a new miner.
- Earnings Withdrawal
You may link a supported third party exchange account to enable automatic daily earnings withdrawals.



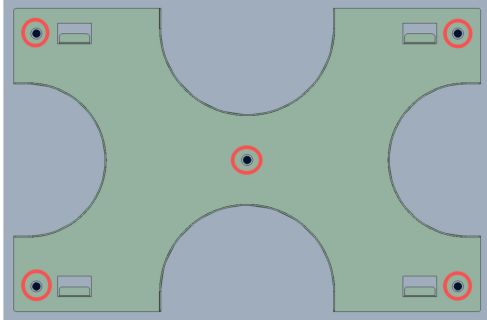
6. Contact Support

- If you encounter any issues while using the app, please contact us through the following channels:

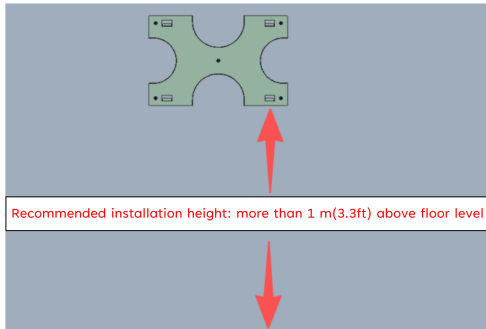
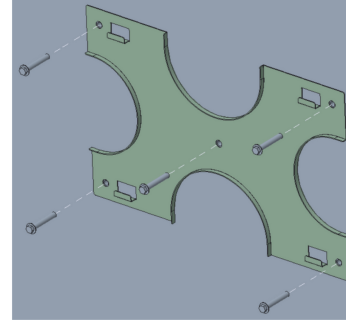
Email: support@hashhouse.tech
Website: hashhouse.tech

H1-630 Wall Mounting Instructions

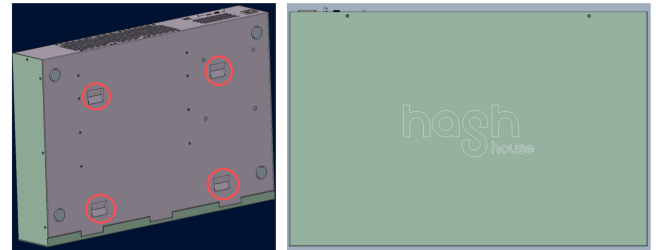
1. Place the wall-mount bracket against the wall and ensure it is level. Using the five mounting holes as reference points, drill five holes in the wall with a diameter of 8 mm and a depth of at least 50 mm. Position the bottom edge of the bracket at least 1 m above the floor.



2. Secure the wall-mount bracket to the wall using expansion bolts. Tighten all fasteners fully to ensure the bracket is firmly fixed and does not loosen.



3. Align the four wall-mounting holes on the rear of the product with the hooks on the bracket. Engage the hooks fully through the mounting holes to support the product securely. Installation is now complete.



Please contact us with any
questions or comments.
inquiry@hashhouse.tech
WWW.HASHHOUSE.TECH

hash
house